

Installation Image

COOLSAVE-D brings results even in a case where many outdoor units are closely spaced.

Please inquire with us for any questions on how to install and maintain the system.
Detailed information and materials are available.



Scale adhesion to outdoor units

Impurities in water may adhere to fins of outdoor units as scaling depending on supply water quality. In such case, cleaning the fins regularly with a high-pressure washer is recommended.



To prevent rust on the fin

If using tap water, spraying anti-rust agent on the fin is recommended to prevent rust.

Specifications, appearance and description shown in this leaflet are subject to change without prior notice for purposes of product improvement.

For details please contact IKEUCHI or one of our distributors in your country.

“The Fog Engineers”
H. IKEUCHI & Co., LTD.

Headquarters

Daiichi Kyogyo Bldg., 1-15-15, Awaza
Nishi-ku, Osaka 550-0011, Japan
Tel: 81-6-6538-4015 Fax: 81-6-6538-4022
E-mail: overseas@kirinoikeuchi.co.jp
URL: <http://www.kirinoikeuchi.co.jp/eng/>

IKEUCHI (SHANGHAI) CO., LTD.

Room C, 21/F, Electrical & Mechanical Bldg., 600 Hengfeng Road, Shanghai 200070, P.R.China
Tel: 86-21-6140-9731 Fax: 86-21-6123-4239 mist@kirinoikeuchi.com <http://www.kirinoikeuchi.com/>
Tianjin Branch Tel: 86-22-2320-1676 Fax: 86-22-2320-1675

IKEUCHI USA, INC.

8110 Beckett Center Drive, West Chester, OH 45069 USA
Tel: 1-513-942-3060 Fax: 1-513-942-3064 info@ikeuchiusa.com <http://www.ikeuchiusa.com/>

IKEUCHI EUROPE B.V.

Asterweg 17 A6, 1031 HL Amsterdam, The Netherlands
Tel: 31-20-820-2175 Fax: 31-20-820-2176 info@ikeuchieurope.com <http://www.ikeuchieurope.com/>

IKEUCHI TAIWAN CO., LTD.

11 F-1, No.27, Sec.1, Chung Shan N. Rd., Taipei, 10441 Taiwan, R.O.C.
Tel: 886-2-2511-6289 Fax: 886-2-2541-6392 sales@ikeuchi.com.tw <http://www.ikeuchi.com.tw/>

PT. IKEUCHI INDONESIA

Ruko Easton Jalan Gunung Panderman Blok E No.9, Lippo Cikarang Kel. Cibatu Kec., Cikarang Selatan Bekasi 17550 Indonesia
Tel: 62-21-2909-3246 Fax: 62-21-2909-3247 sales@ikeuchi.co.id <http://www.kirinoikeuchi.co.jp/ijk/>

For multi-split air-conditioner outdoor units

Fog Cooling System COOLSAVE-D

Fog cooling system for air-conditioner outdoor units increases energy efficiency with little water usage.

Power consumption reduced by up to

10%



“The Fog Engineers”
H. IKEUCHI & Co., LTD.

Becoming a new standard... Fog cooling system for air conditioner outdoor units

Background

Problem

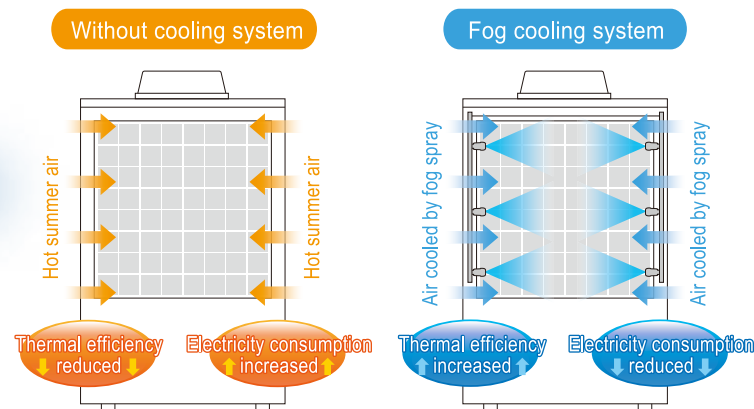
Demand for energy-saving options at low cost for air-conditioning equipment

As global warming and power shortages have become serious problems, finding new ways to save energy is an important issue, especially for air-conditioning equipment which can account for the largest share of building electricity consumption.

Solution

What is an ideal cooling system for air-conditioner outdoor units?

There is a method that can increase air-conditioner efficiency by cooling the outdoor unit with water-sprinkling equipment, but there is the concern about the costs of water consumption and possible water damage to the units.



IKEUCHI offers an efficient Fog Cooling System for outdoor units

Features of our Fog Cooling System

Low water consumption, more efficient cooling

With evaporative cooling, COOLSAVE-D increases the thermal efficiency of the outdoor unit, which reduces electricity consumption. By providing the optimal spray droplet size for cooling air-conditioner outdoor units, water consumption is reduced compared to the water-sprinkling method, resulting in more efficient cooling.

Automatic control available

It is possible to control the spraying time with automated control based on outdoor temperature and/or other external signals, or a simple ON/OFF timer cycle to meet our customers' needs.

Reliable nozzle performance

IKEUCHI has leading technology and know-how earned over decades of experience as a specialty maker of industrial spray nozzles.

That is why our quality-guaranteed spray nozzles can create the fog spray with the optimal droplet size.



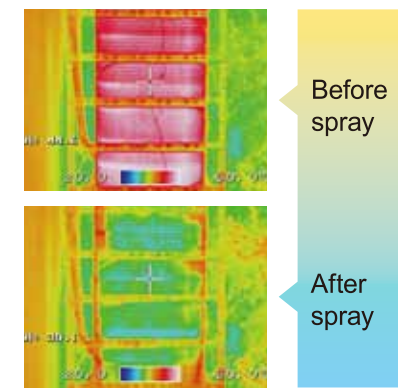
COOLSAVE-D spraying



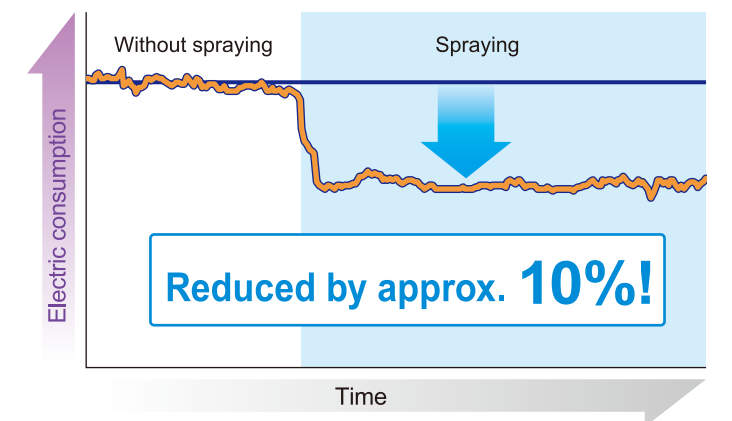
Fine fog spray nozzle

Energy-saving Results from our Fog Cooling System

Thermography measurement of outdoor unit fins

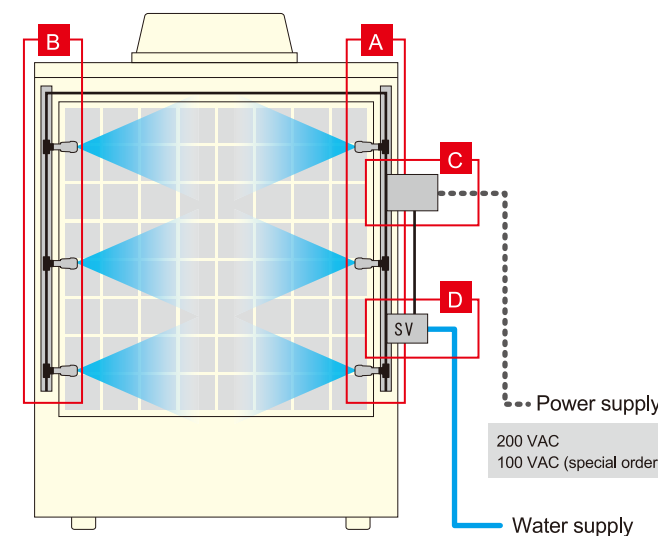


Electricity consumption reduced by Fog Cooling System



Outdoor temperature: 35°C DB, Indoor temperature: 27°C DB/ 19°C WB
Spray condition: Continuous spraying

System Components



A Main header

Fixed on the outdoor units. Sprays fog. (3 nozzles mounted)

B Sub-header(s)

Fixed on the outdoor units. Sprays Fog. (3 nozzles mounted per header)

C Control unit

Controls intermittent timed spray operation*1 based on outdoor environment temperature*2 and/or external signals from such as the outdoor units. Can be linked with two external inputs.

*1 Initial setting for intermittent spray time: Spray ON for 60 sec., spray OFF for 30 sec. (repeating its ON/OFF cycle)

*2 Initial setting temperature to start spray: 32°C (90 deg. F)

D Solenoid valve unit

Regulates the spray ON/OFF by command from the control panel.

(Comprises a solenoid valve and a strainer)

Lineup

Model No.	Main header	Sub-headers	Total spray capacity (at 0.25 MPa)	Outdoor unit capacity
COOLSAVE-D-10	1 header	1 header	25.8 L/hr	10 HP
COOLSAVE-D-20	1 header	3 headers	51.6 L/hr	20 HP